

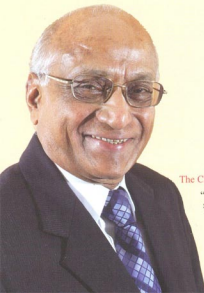
NIPIA

QUALITY THAT'S WORLD CLASS

NIPHA is proud to be a totally Indian company with an international tag of excellence.

A Company that has perfected in-house systems & procedures to produce "QUALITY THAT'S WORLD CLASS". NIPHA is renowned in the domestic and global markets for easily identifiable reasons:

- ◆ Expert mobilization of indigenous skills and resources, manufacturing diverse products from state-of-the-arts: engineering equipment, precision machinery, gear boxes, thrust housings, cotton ginning and pressing machinery and plants to basic products like forgings, castings and carbon and alloy steel bars.
- ◆ An integrated network for after sales service and a team of dedicated engineers experienced in all the facets of turnkey project management and consultancy services.
- ◆ A high performance R & D Cell to continually reap the benefits of latest technological innovation.
- ◆ Strict adherence to design and specifications, satisfactory performance, ease of maintenance ensures on-going relationship with customers.



The Chairman, Mr. G. D. Shah has more to add:

"The Spirit of NIPHA is not limited just to smooth operations and being big. I started with only a modest machine shop in 1960.

The forte of this organization lies in its people and the values it cherishes. Never lose sight of these two."



Dr. R. C. Shah receiving Export Excellence Award from President of India

NIPHA is acknowledged as a multidimensional international organization

- ◆ NIPHA products are being supplied to the quality conscious market of U.S.A, Canada, European Union, New Zealand and Australia and the emerging economies of South East Asia and India.
- ◆ Technology, consultancy services, and turnkey projects are regularly provided to countries of Africa, Southeast Asia and the Middle East.
- ◆ NIPHA has been awarded numerous projects and contracts by multilateral funding agencies like World Bank and African Development Bank against international competitive bidding.

QUALITY

To keep pace with the highest level of expectations, NIPHA puts a premium on QUALITY. A commitment to meet global standards through indigenous enterprise.

For more than FIVE DECADES NIPHA has moved with but one purpose to ensure the highest standards of performance, efficiency and reliability. At NIPHA, every system and every process is carefully monitored keeping in mind our corporate credo "QUALITY THAT'S WORLD CLASS". Putting NIPHA at par with the world's best.

In recognition of successfully implementing a quality system, NIPHA has been accredited with ISO quality certification.





NIPHA EXPORTS

The flagship of the NIPHA Group was established in 1973, and has been recognized by the Government of India as a premier Manufacturing Export House. It has been a National Award Winner for Excellence in export performance since 1975.

NIPHA caters to the technologically mobile markets of North America, Europe and Australia and also the rapidly developing markets of Asia and Africa where economy and efficiency are of paramount importance.

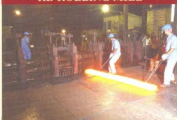
NIPHA Exports is also a merchant exporter of products from other reputed manufacturers under exclusive franchise.

MACHINERY MFG. DIVISION



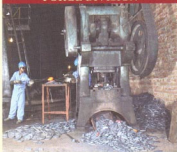
The units are located in the states of Haryana and West Bengal. The division manufactures complete equipment and components for cotton ginning and pressing, oil milling, textiles, jute, mechanized farm equipment, components and assembly for power switching and other industries, mechanical gear boxes and bearing housing. Among the facilities are a precision tool room, modern workshop equipped with CNC machines and fabrication and assembly shops. NIPHA is one of the world leaders in the manufacture of complete range of cotton ginning and pressing equipment.

RE-ROLLING MILL



The re-rolling mill produces diverse sections, shapes and sizes of steel both for captive use and to fulfill the requirements of domestic and international customers.

FORGE DIVISION



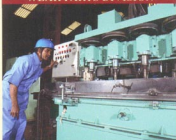
Located in the state of Haryana, it is equipped with belt drop hammers, friction screw press, trimming press, shot blasting machine and heat treatment furnaces backed by a tool room and comprehensive testing and measuring equipment. It manufactures forged components for applications in agro and industrial machinery, automobiles, mining, railways and power transmission.

FOUNDRY DIVISION



The foundry produces ferrous and non ferrous castings conforming to international specifications such as ASTM, BS, DIN and JIS. The facilities include a pattern shop, mechanized sand system, pneumatic moulding machines, melting furnaces, heat treatment and analytical laboratories.

TILLAGE TOOLS & WEAR PARTS DIVISION

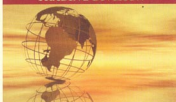


This division produces tillage tools & wear parts for mechanized farming. The facility includes mechanical & hydraulic presses, roll-forge machines, shearing, heat treatment equipment, general purpose machine tools, shot blasting & painting facilities.

TURNKEY PROJECTS & SERVICES DIVISION

Nipha is equipped with a team of engineering experts and executives in different disciplines of the project planning, designing and execution incl. mechanical, electrical, agricultural, oil technology, textile technology hydraulics, utility systems incl. power supply, distribution and lightning, electrical control and instrumentation, compressed air & steam generation and distribution system, fire fighting, affluent treatment and disposal, material handling, storage and packing system. This team is supported by a well equipped design office, project planners, experienced liaison managers and well trained team of erection and commissioning personnel specialized in handling multi-disciplinary projects.

TRADING DIVISION



Through our network of exclusive & screened suppliers, we work as a one stop shop for our customers who want to buy a wide array of products from India.



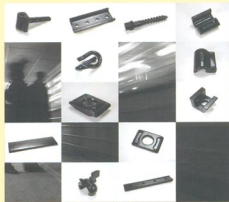
Cotton Ginning Equipment

Roller & Saw Gins, Pre & Post Cleaners, Battery Condensers, Driers & Humidifiers, Baling Presses, Mechanical & Pneumatic Handling Equipment & Power Distribution Control Systems



Ferrous & Non Ferrous Castings

Alloy Steel & Alloy Cast Iron, Ductile Iron, Aluminium Alloy & Copper Alloy



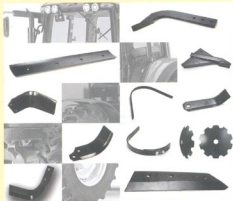
Railway Track Components

Base Plates, Channels, Dog Spikes, ERC, Fish Plates, Forged Shoulders, D Bar, Riser Plates, Screw Spikes, Inserts, etc.



Mechanized Farm Equipments

Rotary Tillers, Groundnut Harvesting Machinery, Post Hole Diggers, etc.



Tillage Tools & Wear Parts

Box Blades, Scarifier Shanks, Rake Tines, Rotary Tiller Blades, Cutting Edges, Plowshares, Harrow Discs, etc.



Forgings & Rolled Products

Spear Heads, E-Clips, Hooks, Shoulders, Turn Buckles, Clevis, Eye Bolts, Tie Rods, etc.

NIPHA

Corporate Headquarters

48 Ganga Jamuna, 28/1 Shakespeare Sarani, Kolkata 700 017, India

Phone: +91 33 4021 4300; 2287 2511; Fax: +91 33 2287 5104; Email: nipha@niphaindia.com; Web: www.niphaindia.com